

AI-powered transformation in banking and finance

A Strategic Guide by Croyten

CONTENTS

- 01 Understanding the Role of Artificial Intelligence in Banking and Finance
- 02 Leveraging AI to Drive Client-Centricity in the Financial Sector
- 03 AI-Driven Digital Client Onboarding: Transforming Financial Services
- 04 Artificial Intelligence Capabilities in Regulatory Compliance
- 05 Transforming Payments With Generative AI Technologies



Understanding the role of Artificial Intelligence in Banking and Finance

In the modern financial landscape, Artificial Intelligence (AI) has evolved from a buzzword into the primary engine of banking innovation. At Croyten, we specialize in bridging the gap between complex AI theory and practical, high-impact banking solutions.

An Overview of the Evolving Financial Landscape

A growing number of banks are integrating AI-based tools to sharpen their competitive edge. These institutions are projected to boost annual productivity by 30%, while the sophisticated data structures and processing models provided by AI could drive a 6% revenue increase over a three-year period. Achieving these gains depends on a collaborative ecosystem where expert staff and engaged customers continuously refine the AI models.

The current frontier of financial technology is defined by agentic AI—autonomous systems capable of taking independent initiative and executing complex workflows. To integrate these agents safely, financial institutions must prioritize "compliance-by-design," embedding auditability, strict permission protocols, and mandatory human checkpoints directly into the agent's logic. Achieving this at scale requires a modernized technical foundation, including cloud-native environments, sophisticated orchestration for

multi-agent coordination, and a rigorous data governance framework that ensures high-quality data lineage and accessibility. This represents a fundamental shift in banking operations, moving from a model where humans perform every task to an "agent-at-the-center" approach. In this new structure, AI agents handle the primary execution while human experts provide high-level oversight and make the most consequential decisions, a transition that necessitates purposeful change management and, frequently, a complete redesign of traditional organizational hierarchies.

Building the Foundation for Enterprise-Scale AI

As artificial intelligence moves from isolated pilots to widespread adoption, financial institutions are overhauling their underlying technical frameworks. While many banks initially leaned on third-party providers for rapid deployment, the reality of high computational costs is driving a shift toward hybrid AI infrastructures. By blending on-premises hardware with public, private, and specialized cloud

environments, banks can achieve the elasticity required for growth while maintaining the strict security and regulatory compliance necessary for sensitive financial data.

The Necessity of Modern Infrastructure and Cultural Alignment

Technological success is inextricably linked to the modernization of core systems and a robust transition to the cloud. Without a sophisticated data architecture and rigorous governance, even the most advanced AI models will likely yield limited results. Furthermore, this evolution demands a fundamental cultural shift where human expertise and machine intelligence collaborate seamlessly. This partnership must be designed to enhance productivity without sacrificing the essential pillars of accountability and trust. For these initiatives to succeed, leadership must establish a unified vision, backed by consistent investment, ensuring that every small-scale project contributes to the organization's broader strategic goals.

Strengthening Data Commitment for an AI-Ready Future

Significant progress has been made in migrating core data to the cloud, yet the urgency to build AI-grade infrastructure has never been higher. Standard cloud storage is insufficient; without a specialized environment, generative AI pilots risk stalling or failing to meet rising customer expectations. A future-proof data architecture is now a critical priority to prevent model underperformance and to provide a launchpad for upcoming autonomous agent initiatives.

Evaluating Global Banking Readiness

The current state of data readiness remains inconsistent across the banking sector. Even as cloud migration streamlines certain processes, many institutions struggle with "bad" data that was migrated without proper cleaning or information that remains trapped in digital silos. Interestingly, banks that prioritized data for regulatory mandates—such as capital liquidity rules or stress testing—often possess cleaner and more traceable datasets. However, the challenge lies in breaking these compliance-specific silos to create a unified foundation that can be scaled across the entire enterprise.

Innovations in Data Management and Strategy

Leading institutions are adopting more sophisticated methods to manage information, such as treating data as a product to ensure its consistency, discoverability, and reusability. This "data-as-a-product" philosophy creates high-quality, retrieval-ready sets that are essential for advanced AI training. Furthermore, experience with robotic process automation has helped some firms establish clear

data catalogs and quality monitoring, providing the stability required for accurate AI modeling.

Defining AI-Ready Data in a Modern Context

In the age of AI, the definition of "good data" has been completely redefined. To be truly AI-ready, data must be reliable enough to prevent model drift, timely enough to support real-time decision-making, and broad enough to capture nuances across various formats. These attributes are mutually reinforcing: speed is useless without trust, and breadth is merely noise without proper context. The ultimate challenge for modern banks is to advance reliability, timeliness, breadth, and governance in unison, ensuring the foundation can support the increasing speed and sophistication of the AI landscape.

Croyten: Your Partner in Architecting AI Readiness

As banks face the daunting task of modernizing legacy systems, Croyten provides the strategic engineering needed to build a truly AI-ready infrastructure. Croyten excels at breaking down the silos between compliance data and operational AI, transforming fragmented information into a unified, "data-as-a-product" asset. By implementing hybrid cloud strategies and rigorous governance protocols, Croyten ensures that your data foundation is not only compliant but also optimized for the high-performance demands of generative and agentic AI. With Croyten, financial institutions can accelerate their transition from scattered pilots to a resilient, enterprise-wide AI ecosystem.

Research from the McKinsey Global Institute indicates that generative AI has the potential to generate between \$2.6 trillion and \$4.4 trillion in annual global value across dozens of analyzed use cases. The banking sector stands out as a primary beneficiary of this technology, with an estimated opportunity ranging from \$200 billion to \$340 billion. Much of this projected financial gain is expected to stem from significant improvements in operational productivity.

The Four Pillars of AI-Ready Data Architecture

| Pillar | Description | Strategic Importance of AI |
|--|--|---|
| Data Veracity & Reliability | Ensures information is precise, comprehensive, and consistent. This involves automated correction, end-to-end tracking of data origins, and continuous monitoring for algorithmic bias or performance decline to maintain long-term stability. | Minimizes modeling errors and ensures results are reproducible and auditable. This is vital for meeting regulatory standards and maintaining high performance as market variables shift |
| Velocity & Accessibility | Focuses on reducing latency and ensuring data is available in real-time or via optimized batches. It breaks down departmental silos through unified access protocols and secure self-service gateways for both staff and automated systems. | Enables instantaneous decision-making for critical functions like fraud prevention and dynamic pricing. It shortens the development cycle, allowing for faster transition from raw data to actionable business insights. |
| Depth & Contextual Meaning | Prioritizes a wide-ranging data set across various formats (text, audio, visual) paired with high-quality metadata and clear labeling. This ensures data is interoperable across different platforms and business units. | Enhances the accuracy of Large Language Models (LLMs) and Retrieval-Augmented Generation (RAG). Providing models with a holistic, well-labeled signal improves retrieval quality and promotes the reuse of data features. |
| Governance & Protection | Integrates security and compliance directly into the data lifecycle. This includes clearly defined data stewardship, localized and international regulatory alignment, and automated policy enforcement at the point of use. | Preserves client confidentiality and ensures legal compliance. By automating rule enforcement, banks can scale safely across different regions and prevent expensive security breaches before they occur. |

Leveraging AI to Drive Client-Centricity in the Financial Sector

As artificial intelligence becomes the standard, financial consumers now demand more than just basic services; they expect tailored tools and institutions that anticipate their needs by analyzing personal behavioral trends.

To stay competitive, financial firms are prioritizing hyper-personalization—a strategy that utilizes diverse internal and external data sets to customize client interactions. While this approach is essential for delivering relevant promotions, the integration of artificial intelligence elevates these efforts significantly. Specifically, generative AI can process immense volumes of consumer data to offer real-time product recommendations at an incredibly granular level. By providing these dynamic, high-engagement experiences, banks can cultivate deeper loyalty and accelerate business expansion.

Establishing a Competitive Edge in Tech

In a landscape where standard banking products have become largely interchangeable, the true market leaders are those that distinguish themselves through highly tailored and relevant user experiences. This environment is shifting rapidly as conventional sources, retail giants and automotive companies are now embedding seamless credit and

payment solutions directly into their purchase journeys. Simultaneously, agile fintech startups and digital-only "neobanks" are capturing interest with everything from automated investment assistants to interactive, gamified savings tools. To maintain their standing against these diverse challengers, established financial institutions must prioritize continuous innovation. Survival depends on crafting unique value propositions and delivering frictionless services that not only meet modern expectations but also ensure long-term client retention.

The Progression of AI in the Financial Sector

Artificial intelligence is a well-established tool in the banking industry rather than a recent novelty. For decades, financial firms have utilized these technologies to organize and categorize their client bases. The current shift, however, marks a transition from general group analysis to the delivery of truly individualized experiences. To succeed in this area, banks are now integrating feedback from a variety of

touchpoints, such as direct conversations with relationship managers, website activity, chat logs, and email correspondence. By synthesizing this data, institutions can maintain a real-time understanding of evolving consumer behaviors. This intelligence powers virtual assistants for custom support and optimizes marketing efforts to improve engagement.

Foundational Architecture for AI Advancement

To successfully implement artificial intelligence, financial institutions require a formidable technological backbone. This includes high-performance computing clusters, robust server environments, and massive data storage capabilities. Banks must choose between the localized control of on-premises hardware and the elastic scalability of cloud-based platforms. This decision is typically dictated by the sensitivity of the data, evolving regulatory mandates, and the specific requirements for processing vast datasets.

A significant hurdle for many banks is the prevalence of fragmented information systems. Historically, data has been trapped in isolated silos, making it difficult to gain a holistic understanding of a client's total engagement with the bank. Overcoming these barriers requires a focused investment in data rationalization. By consolidating disparate financial and behavioral data into a single, unified pool, banks create a versatile foundation. This initial effort pays dividends by powering a wide array of AI applications across the entire organization, from marketing to risk management.

A significant hurdle for many banks is the prevalence of fragmented information systems. Historically, data has been trapped in isolated silos, making it difficult to gain a holistic understanding of a client's total engagement with the bank. Overcoming these barriers requires a focused investment in data rationalization. By consolidating disparate financial and behavioral data into a single, unified pool, banks create a versatile foundation. This initial effort pays dividends by powering a wide array of AI applications across the entire organization, from marketing to risk management.

The Role of External Partners

When evaluating whether to build new projects internally or outsource them to external partners, financial institutions should categorize each initiative based on its role within the broader AI environment. This decision rests on identifying whether a project offers a distinct competitive advantage or if it provides a standard, functional capability that is common across the industry.

Organizations should aim to internally develop and control the functions that are central to their brand identity and

customer experience. For instance, if a specific engagement center or client interaction model is a primary reason for customer loyalty, the bank should maintain ownership of that technology. Conversely, for peripheral applications that are not fundamental to the business's unique value proposition, building an entire proprietary suite of technology is often unnecessary.

Service providers offer significant advantages by helping firms manage the swift pace of technological change. These partners bring valuable experience gained from multiple implementations across different sectors, allowing them to recognize successful patterns and avoid common pitfalls. This external perspective is particularly useful for managing organizational transitions and ensuring new tools are adopted effectively.

Comprehensive operational shifts can be overwhelming and technically difficult. Professional consultants and technology partners assist by encouraging ambitious goals while providing the necessary tactical support. This includes specialized execution strategies, such as modernizing human resources and talent acquisition, which are essential for implementing large-scale changes successfully.

Why Choose Croyten as Your AI Partner?

As financial institutions navigate these complex decisions, Croyten emerges as a premier partner capable of bridging the gap between ambitious AI vision and practical execution. By combining deep domain expertise in banking with advanced proficiency in generative and agentic AI, Croyten helps firms identify which core functions to own and which standard processes to optimize. Their approach focuses on

creating scalable, human-centric solutions that integrate seamlessly into existing workflows, ensuring that technology serves as a catalyst for deeper customer loyalty rather than a digital barrier. Whether managing the intricacies of large-scale change or deploying specialized tools for real-time behavioral analysis, Croyten provides the strategic guidance and technical rigor necessary for banks to lead in an increasingly automated landscape.

Highlights

- 01** Within a landscape where financial products are largely indistinguishable, the primary differentiator for top-tier institutions is the delivery of hyper-relevant, bespoke experiences.
- 02** By providing tailored support for debt reduction, retirement strategy, and routine fiscal management, banks can guide clients toward their objectives, establishing a foundation of lasting confidence and brand devotion.
- 03** Ultimately, the AI revolution will favor firms that use high-tech tools to amplify, rather than replace, a human-centric philosophy.

AI-Driven Digital Client Onboarding: Transforming Financial Services

The financial services industry is currently navigating a fundamental shift in how it welcomes new clients. Traditional onboarding methods have become liabilities: they are slow, expensive, and increasingly vulnerable to sophisticated compliance threats. In an era defined by stringent regulations and a demand for instant digital gratification, financial institutions must evolve.

Artificial Intelligence is the catalyst for this transformation. By automating complex workflows, AI enhances operational efficiency and accuracy while stripping away the friction that leads to customer abandonment. This white paper examines the pivotal role of AI in reshaping the financial landscape through the lens of market benchmarks and real-world results.

The Cost of Tradition: Market Challenges

Modern institutions are grappling with significant pain points inherent in legacy onboarding systems:

- **Financial Drain:** Banks invest tens of millions annually in Know Your Customer compliance, with global tier-one institutions often spending hundreds of millions to maintain manual oversight.
- **Operational Lag:** The average onboarding window remains nearly a month long, while complex corporate

clients can face delays of over a quarter.

- **The Abandonment Gap:** Nearly half of all potential customers walk away from applications due to excessive paperwork and poor digital interfaces.
- **The Fraud Epidemic:** Identity fraud continues to result in tens of billions in annual losses, proving that manual verification is no longer a sufficient shield.

Navigating the Regulatory Minefield

Regulatory bodies have intensified their scrutiny of Anti-Money Laundering, Counter-Terrorist Financing, and data privacy protocols. Institutions must now balance strict adherence to global guidelines—including FATF, AMLD, FinCEN, and GDPR—against the need for speed. The consequences of failure are severe, with billions in fines issued annually for KYC and AML lapses.

How AI Reinvents the Onboarding Journey

- **Operational Velocity and Cost Efficiency:** AI transitions onboarding from a timeline of weeks to a matter of minutes. By automating data entry and verification, institutions can achieve a significant reduction in compliance costs and nearly eliminate human error in identity processing.
- **Next-Generation Identity Verification:** Modern AI utilizes biometric authentication and liveness detection to outpace deepfakes and sophisticated fraud.
- **The "One-Click" Experience:** To compete with digital-first giants, banks must offer a seamless user journey. AI facilitates this through omnichannel support, automated risk scoring for instant approvals, and multilingual capabilities that support global financial inclusion.
- **Dynamic Risk Monitoring:** Compliance is no longer a

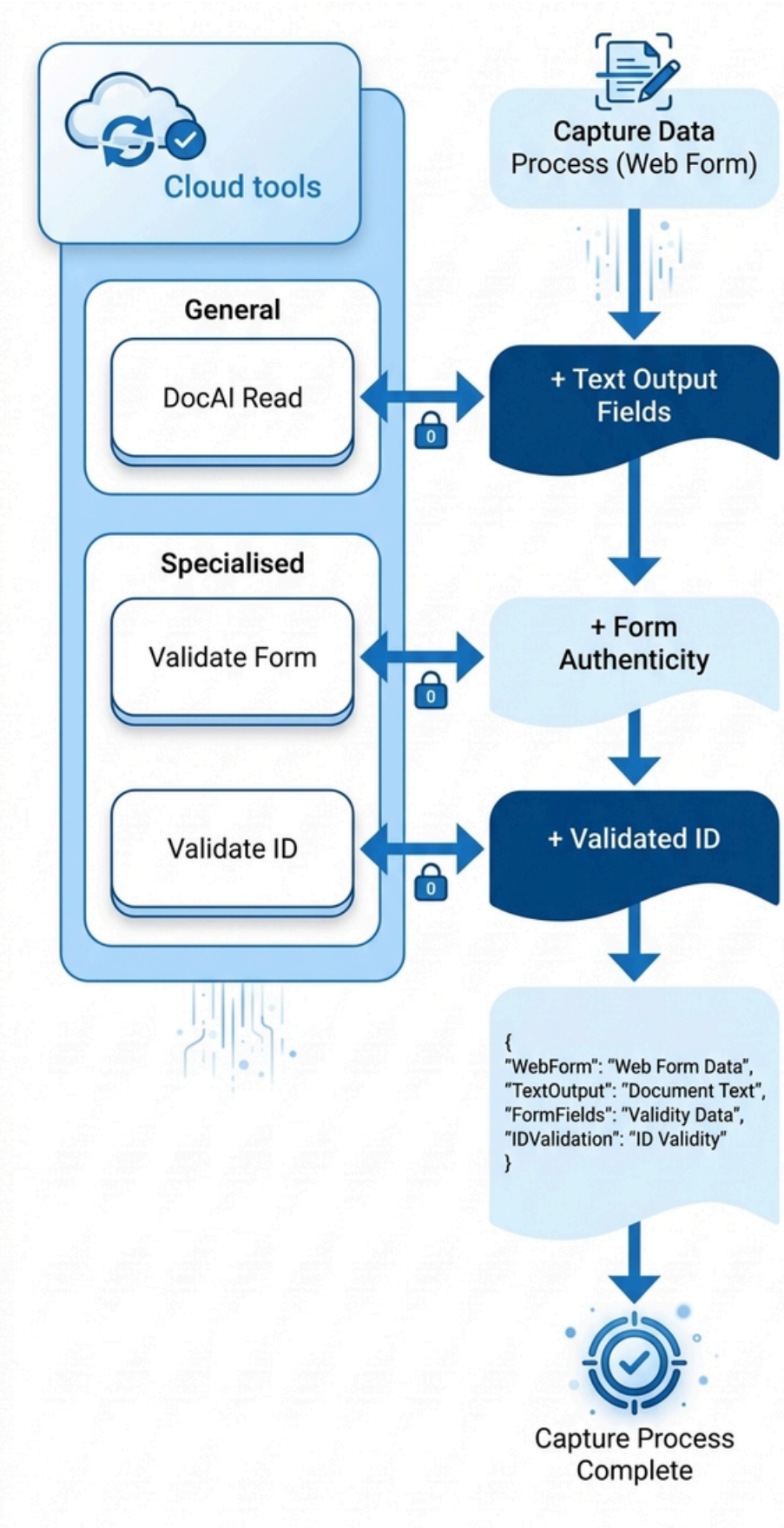
one-and-done" event. AI enables continuous KYC, providing real-time transaction monitoring and automated screening against global watchlists. This proactive approach reduces false positives by up to half, allowing human teams to focus exclusively on high-risk threats.

The Road Ahead: Emerging Trends

The future of onboarding is defined by the integration of AI with Blockchain for decentralized identities, the rise of Explainable AI to provide transparent audit trails for regulators, and the implementation of Zero Trust security models. By 2027, the market for these intelligent solutions is expected to grow exponentially as digital identity wallets become the standard for fintech and banking.

Why Choose Croyten as Your Technology Partner

Successfully implementing AI requires more than just software; it requires a partner who understands the intersection of complex financial regulations and cutting-edge engineering. Croyten serves as that strategic bridge. We specialize in deploying bespoke AI architectures that integrate seamlessly with your existing core banking systems, ensuring that your transition to digital onboarding is both rapid and secure. Our expertise in data science and financial workflows allows us to help institutions minimize technical debt while maximizing ROI, turning compliance from a cost center into a competitive advantage. With Croyten, you aren't just buying a tool; you are gaining a dedicated team committed to future-proofing your operations against an evolving threat landscape.



Case Study: Modernizing Digital Wealth Onboarding With FusionIQ

FusionIQ partnered with Croyten to modernize the retail investing experience. Its cloud-native, modular platform delivers an **investor-led digital onboarding** journey that combines robo-advice, self-directed trading, and advisor-guided investing. In practice, firms can launch a private-label digital wealth solution in as little as 6 weeks, and onboard new clients in minutes rather than days. The platform's headless-API architecture powers all user touchpoints – web, mobile or custom UIs – on a single scalable cloud system. Key features include paperless account opening, flexible risk-profiling, a model-portfolio marketplace, and fractional-share investing. As a result, clients rapidly attract younger, tech-savvy investors and grow assets under management while cutting operating costs.

Business Context

Financial institutions are under pressure to digitize wealth services for a new generation of investors. Younger and often first-time investors expect a fast, mobile-friendly experience – “they don't want to sit in an office filling out mountains of paperwork”. At the same time, firms must retain experienced advisors and meet rigorous compliance standards. To address these needs, firms like American Stock Transfer & Trust (AST) sought a turnkey digital platform that could serve shareholders with modern investing tools (fractional shares, diverse portfolios) alongside robust advisor support. FusionIQ's solution bridges this gap with a **dual-journey** approach: clients can choose a do-it-yourself path or lean on professional advice, all within one system. By digitizing every step – from KYC identity

checks to risk profiling and funding – FusionIQ eliminates redundant data entry and accelerates account openings. In practice, investors can open, fund, and begin trading their account entirely online in minutes, not days.

Solution Overview

FusionIQ's platform is built on interchangeable modules that cover the full wealth management workflow. Core modules include **Digital Advice** (automated portfolio construction), **Advisor-Led Investing** (hybrid advisory tools), **Self-Directed Trading, a Digital Onboarding** engine, and a **Model Marketplace** of investment portfolios. Because it is fully customizable and custodian-agnostic, each client can pick only the needed pieces or deploy the entire suite as a turnkey solution. For example, AST's shareholder platform incorporated FusionIQ's advisor support alongside a new fractional-shares investing portal.

Key innovations include a **headless API architecture** that unifies web, mobile and partner interfaces on one back end. This allows firms to embed investing tools into existing apps or build fully branded experiences. FusionIQ also provides pre-built integrations with multiple clearing and custody providers. Its plug-and-play framework connects seamlessly to Pershing, Fidelity, Apex Clearing, DriveWealth and other trusted brokers. In practice, an institution can go live with minimal IT effort – one credit union built a custom mobile investing app and live deployment in just six weeks.

FusionIQ's **value proposition** centers on "democratizing wealth" for all investor segments. By supporting low-minimum accounts and fractional shares, firms can capture millennials and smaller retail investors that traditional

platforms ignore. Automated advisory tools help those new investors stay on track, while existing advisors can continue servicing high-net-worth clients. Together, these elements create a cohesive digital experience that accelerates client acquisition and AUM growth.

Key Technical Challenges and Solutions

- **Data and Workflow Integration:** Firms needed to unify advisor and investor workflows without duplicating data. FusionIQ solved this with an API-first design and a unified data model. All client information – risk questionnaires, account balances, transactions – lives in shared services. The headless API layer exposes this data to both investor and advisor portals, ensuring consistency. Regulatory forms and audit trails are automated; for example, KYC/AML screening and suitability checks run in the onboarding flow so advisors see only SEC-compliant profiles.
- **Hybrid Advice and Self-Directed Coexistence:** Combining "set-it-and-forget-it" robo advising with manual trading was a major requirement. FusionIQ employs modular portfolio engines: risk-based model portfolios are generated automatically (digital advice), while a full-featured brokerage order engine supports self-directed trades. Advisors can override or supplement models via the same APIs. This **dual-journey** setup lets any client switch seamlessly between self-service and advisory modes.
- **Multi-Custodian Connectivity:** Integrating different clearinghouses traditionally requires heavy development. FusionIQ's solution includes flexible, data-driven

adapters for each custodian API. From Pershing and Apex to newer platforms like The Greens (a cloud-native clearing provider), FusionIQ employs secure, real-time APIs for money movement, trade execution and position updates. This multi-clearing approach gives clients choice and redundancy. In practice, custody connections can be configured in weeks, and trades or deposits route automatically to the appropriate broker.

- **Scalability and Cloud Security:** Serving millions of users with financial data demands a scalable yet secure architecture. FusionIQ runs on a fully managed cloud platform with containerized microservices. The back end is horizontally scalable (auto-scaling application servers, distributed databases) and meets enterprise security standards. All communication is encrypted, and access is governed by role-based security. FusionIQ's SaaS model also means the platform is continuously updated, and clients can choose a "pay-as-you-grow" pricing rather than large upfront licenses.
- **Regulatory Compliance and Reporting:** The platform embeds rules for financial regulations at every layer. Compliance workflows (e.g. Form CRS, KYC disclosures) are built into the onboarding process. FusionIQ automatically logs every client interaction and order, simplifying audit reporting. This automation means advisors spend less time on paperwork and more on client relationships.

Platform Architecture Highlights

- **Modular, Microservices Design:** The FusionIQ core runs as an API-first, microservices platform. Each function

(onboarding, portfolio management, trading, compliance) is a separate service that can be deployed or scaled independently. Firms access functionality via well-documented RESTful endpoints. This decoupling allows third parties to integrate FusionIQ services in their apps seamlessly.

- **Headless API and Multi-UI:** FusionIQ's "headless" architecture means the same logic and data serve desktop and mobile apps. For example, the onboarding module can power a bank's mobile app wizard or a web portal form without extra integration work. The platform natively supports web, iOS and Android clients, and also exposes open APIs for custom UIs or partner solutions.
- **Cloud-Native Deployment:** The platform operates in a virtual private cloud with enterprise-grade compliance (SOC 2, encryption at rest). Its stateless services use Kubernetes containers for orchestration. Databases and messaging queues (for trade and data sync) are fully managed. Auto-scaling groups ensure that peak trading hours or onboarding campaigns do not slow performance.
- **Plug-and-Play Integration:** FusionIQ maintains a library of connector modules for custodians, data feeds and other fintech services. For example, live market data streams and news feeds can be turned on via configuration..
- **Pre-Built Advisory Modules:** The platform includes an "Advisor Dashboard" that presents each advisor's book of business, along with tools to manage custom model portfolios and trade on behalf of clients. The **Model**

Marketplace module lets wealth managers upload or select vetted portfolio strategies. These models automatically rebalance across client accounts via the same orchestration engine used for automated advice.

- **Rapid Deployment Framework:** Behind the scenes, FusionIQ uses modern DevOps. Continuous integration pipelines and infrastructure-as-code allow new features or client-specific customizations to be rolled out quickly and safely. In fact, FusionIQ advertises that a full private-label wealth solution can be launched in ~6 weeks.

Business Impact

By digitizing the entire investor lifecycle, clients of FusionIQ have seen dramatic results. In one example, a large credit union added FusionIQ's mobile investing platform and saw a 10x increase in new digital investment accounts within one year. Member surveys cited the paperless onboarding and simple robo-advice as key attractions. Similarly, an RIA expanded its business by tapping young investors: FusionIQ's turnkey digital advisor allowed it to service "younger, digital-savvy first-time investors" and grow AUM faster than the competition.

Across deployments, firms report that onboarding times have collapsed and conversion rates have risen. New accounts that once took days of paperwork can now be opened in under 5 minutes. Employees spend far less time on manual compliance tasks, which has lowered operational costs and accelerated time-to-revenue. For the AST platform in particular, shareholders gained "access to the tools they need to achieve their financial goals" through incremental fractional investments, increasing overall participation in the

plan.

FusionIQ's impact is also reflected in industry recognition. FusionIQ won multiple awards – for example, it was named one of "America's Best TAMPs" in 2021 and won an Aite Group Innovation Award for digital investment management. These accolades mirror the business benefits: more client assets, deeper engagement across demographics, and a modern brand reputation. In summary, by partnering with FusionIQ, firms have transformed their wealth offerings into competitive, next-generation digital experiences that drive growth and client loyalty.

Artificial Intelligence Capabilities in Regulatory Compliance

This report discusses the practical applications of artificial intelligence within modern compliance frameworks, as well as the strategic factors involved in deploying these systems. By connecting these technological capabilities to the broader business environment, this overview builds upon the foundational principles of regulatory management and operational complexity.

Current Integration of AI in Regulatory Frameworks

Artificial intelligence is fundamentally changing how organizations navigate complex regulatory environments. Modern systems, primarily powered by machine learning, provide the capacity to evaluate extensive and intricate datasets, turning raw information into actionable strategy. By processing both structured and unstructured data with high speed and precision, these tools allow teams to meet their obligations more efficiently across several critical domains.

Core Areas of Impact

- **Real-Time Monitoring:** Systems analyze transaction flows as they happen to identify anomalies that may indicate illicit activity. This improves the accuracy of alerts and significantly reduces the occurrence of false positives.
- **Documentation and Reporting:** Natural language

processing tools automate the review of legal documents and the generation of regulatory reports, ensuring organizations keep pace with shifting legal requirements.

- **Behavioral Surveillance:** Advanced tools monitor internal communications to detect prohibited activities, even when complex professional jargon is used.
- **Verification Processes:** Automated identity verification and risk profiling strengthen due diligence procedures by cross-referencing diverse data sources instantly.

Data Integrity and Security Management

The significant power of these technologies introduces specific operational challenges. The most critical priority is the continuous tracking of data origins and the maintenance of high data quality. For an automated system to function reliably, the underlying information must be accurate and integral.

These concerns are amplified when involving external service providers. Many organizations harbor reservations regarding data privacy and security once information moves beyond their internal infrastructure. While some industry reports indicate a growing trend toward utilizing third-party providers, a significant majority of organizations currently prefer to maintain their AI operations in-house to ensure total control over their proprietary data.

Governance and Risk Mitigation

Beyond data security, the deployment of intelligent models requires a comprehensive governance framework. Such frameworks are essential for managing a variety of risks, including potential attacks on the models themselves, general trust and testing validation, and evolving regulatory standards for AI use. Effective governance focuses on transparency and the ability to interpret model results. It aims to eliminate bias and mitigate risk, though strategies must be customized to fit the specific operational context.

The Necessity of Human Oversight

Despite the sophistication of modern technology, human judgment remains a vital component of a resilient system. Professionals emphasize that a "human-in-the-loop" approach is indispensable for overseeing automated applications. Expert intervention is required to validate outputs, provide context to findings, and ensure that the final decisions made are accurate, ethical, and aligned with the organization's overall strategy.

Strategic Integration of Artificial Intelligence in Compliance Systems

The adoption of artificial intelligence is transitioning from isolated, team-specific applications to a comprehensive, organization-wide strategy. This shift reflects a growing recognition that AI creates the most value when it is deeply integrated into the overarching corporate goals. Rather than implementing technology in a vacuum, firms are now selecting specific use cases based on their ability to drive long-term strategic objectives.

To scale these initiatives effectively, organizations must ensure several enabling factors are in place:

- **Organizational Structure:** Aligning departments to support cross-functional AI projects.
- **Talent Acquisition:** Building teams with the expertise to manage and refine complex models.
- **Infrastructure:** Developing the technical foundation required to process large-scale data securely.

The Critical Role of Explainability

In the financial and regulatory sectors, the ability to articulate how a model reaches a specific conclusion—often referred to as explainability—is a fundamental requirement. Stakeholders are moving away from "black box" systems toward transparent tools that build trust with both users and regulators. For service providers and technology firms, explainability has become a key competitive differentiator. High levels of transparency ensure that AI-driven analysis is viewed as an accountable tool rather than an opaque mystery, which is particularly vital for processing textual data and generating credible reports.

A Three-Tiered Governance Structure

Effective oversight of AI requires a robust governance framework adapted to manage the unique risks associated with machine learning. A tiered "lines of defense" approach is often employed to maintain control:

- **Model Developers** are responsible for embedding explainability techniques directly into the model during the deployment phase, regardless of whether the system is built internally or sourced externally.
- **Validators and Risk Managers** assess the models from a risk perspective, validating outputs and defining the conditions under which the models can be safely used.
- **Audit and Compliance Functions** ensure that the explanations provided by the system are clear, justifiable, and easily understood by both internal staff and external auditors.

Balancing In-House Development and External Partnerships

Organizations face a strategic choice between building bespoke AI solutions or partnering with third-party vendors.

In-House Development: Favored by large institutions with complex operations, this path offers maximum control over customization, risk management, and internal taxonomies.

Third-Party Solutions: While potentially faster to deploy, external vendors must meet rigorous standards for regulatory readiness to be considered viable.

A hybrid approach is emerging as a potential solution. Industry standardization and the use of open-source tools can foster greater interoperability, allowing proprietary systems to work seamlessly with external innovations. Ultimately, the goal is to find a balance that meets operational needs while satisfying strict regulatory expectations.

Croyten serves as a strategic external partner for organizations looking to bridge the gap between complex regulatory requirements and cutting-edge technology. As a specialized provider, Croyten offers pre-configured AI frameworks that meet the rigorous "high bar" of regulatory readiness required by large financial institutions. By focusing on seamless integration and interoperability, they allow firms to adopt a hybrid model—combining the control of in-house governance with specialized expertise of a dedicated technology partner. Their role is essential for firms that need to scale their compliance capabilities quickly without compromising on data integrity or explainability standards.

Transforming Payments With Generative AI Technologies

GenAI is reshaping the payments landscape by streamlining operations, enhancing fraud detection, and enabling hyper-personalized customer experiences. It has the potential to transform how we handle money through its role in agentic commerce, where AI transacts autonomously on our behalf, acting as the decision-making engine behind autonomous digital agents.

The payment industry is currently undergoing one of its most significant technological shifts since the introduction of the credit card. While the transition from cash to cards and eventually to mobile commerce focused on convenience and connectivity, the current era is defined by the move from manual automation to total autonomy. Generative Artificial Intelligence (GenAI) is at the heart of this transformation, acting as a catalyst for a new economic model where technology does more than just facilitate a transaction—it anticipates, decides, and executes on behalf of the user.

The Historical Context and the Need for Change

To understand the impact of generative technologies, one must look at the evolution of value exchange. For decades, payments relied on physical cards, which eventually drove trillions in global transactions. The subsequent rise of cloud computing and mobile commerce further democratized the market, pushing e-commerce sales to record highs and making borderless digital marketplaces a reality. However,

despite these advancements, the payment process has remained plagued by friction. Password management, multi-factor authentication failures, and transaction errors continue to create barriers between a consumer's intent and the final settlement.

Traditional AI helped mitigate some of these issues through predictive modeling, but it was limited by its reliance on historical data and rigid rules. The introduction of generative models has changed the paradigm by allowing systems to understand context, synthesize unstructured data, and generate human-like responses. This shift is now evolving into "Agentic AI," where the system transitions from a content creator to an autonomous decision-maker.

Defining the Shift: From Generative to Agentic AI

While Generative AI is capable of producing sophisticated marketing copy, analyzing massive datasets, and personalizing user interfaces, it still generally requires a

human prompt to initiate action. The next frontier, Agentic AI, embeds decision-making directly into the system. These autonomous agents can initiate actions, adapt to new information in real-time, and optimize outcomes without constant human oversight, provided they remain within predefined ethical and operational guardrails.

In the payments space, this means moving toward a frictionless ecosystem. Instead of a user manually logging into a banking app to settle a bill or verify a purchase, an autonomous agent can monitor the user's financial habits, verify the legitimacy of a request, and complete the transaction securely. This evolution is set to add trillions of dollars to the global economy annually, driven by massive productivity gains and the creation of entirely new business models.

Revolutionizing Operational Efficiency and Compliance

One of the most immediate impacts of these technologies is

found in the back-office operations of financial institutions. Many organizations are adopting a strategic, low-risk approach by first applying AI to internal efficiencies. Automated document analysis is now a standard application, allowing firms to parse complex regulatory requirements, update internal policies, and manage contracts with minimal human error.

In highly regulated markets, where data privacy is a primary concern, these tools allow for proactive risk management. By automating the generation of compliance documentation and reporting, firms can reduce the manual labor previously required for regulatory oversight. This efficiency extends to identity verification, where AI-driven onboarding tools have significantly reduced the time and cost associated with acquiring new customers. By increasing the accuracy of identity checks, platforms are seeing a dramatic decrease in false positives, allowing more users to pass through verification hurdles without needing human intervention.

Enhancing Security through Real-Time Intelligence

Fraud detection remains a top priority for payment providers, and generative technologies are providing a level of defense that was previously impossible. Traditional rules-based systems often struggle with sophisticated, evolving attack patterns. In contrast, modern AI models can analyze transaction patterns in real-time to identify anomalies and flag potential illicit activity instantaneously.

These systems assign risk scores to card-not-present transactions, helping to prevent account attacks before they can cause financial loss. Furthermore, some institutions are exploring the use of AI to analyze communication patterns,

such as customer service calls, to detect signs of fraud in speech patterns. By integrating these real-time scoring mechanisms, businesses can maintain high levels of security without introducing unnecessary friction into the user experience.

Hyper-Personalization and the Customer Journey

The customer experience is being redefined through hyper-personalization. By analyzing vast amounts of transaction data, AI can formulate tailored payment solutions and customized loyalty programs that resonate with individual consumer behaviors. For example, marketing campaigns that use AI to generate creative assets and copy have proven to be significantly more effective than traditional methods while reducing overall marketing spend.

Beyond marketing, virtual assistants are becoming the primary interface for many consumers. These 24/7 chatbots use sentiment analysis to interact in natural language, handling everything from routine balance inquiries to complex tasks like blocking a lost card or adjusting credit limits. This level of support ensures that users receive instant assistance, while human agents are freed up to handle more nuanced and high-value customer needs.

Financial Inclusion and SME Growth

Generative technologies are also playing a crucial role in expanding financial inclusion. In many emerging markets, small and medium-sized enterprises (SMEs) often lack the traditional credit histories required to secure loans. AI models can now bridge this gap by analyzing alternative data sources, such as e-commerce transaction history, mobile

wallet usage, and utility payments.

By providing automated credit decisions based on these diverse data points, financial institutions can offer credit to millions of previously underserved businesses. This not only supports local economic growth but also integrates more participants into the formal digital economy. Additionally, AI-powered content engines are being used to provide financial literacy programs in local dialects, helping first-time digital banking users navigate the complexities of modern finance.

Strategic Implementation and the Role of Partners

For organizations to successfully navigate this transformation, they must develop a comprehensive strategy that addresses data architecture, talent, and ethics. A robust data strategy, sponsored by senior leadership, is essential for ensuring that the underlying information used by AI models is accurate and secure. Firms must also decide between building proprietary in-house solutions or partnering with external technology providers.

External partners like Croyten play a vital role in this ecosystem. Specialized partners offer pre-configured frameworks that meet the high standards of regulatory readiness required by large financial institutions. By utilizing a hybrid model, firms can combine their internal governance with the specialized expertise and rapid innovation of external technology partners. This allows for faster scaling of AI initiatives while maintaining strict control over data integrity and explainability.

Turning AI into ROI for Banking and Financial Services

To learn more about how your bank can leverage AI, please contact:



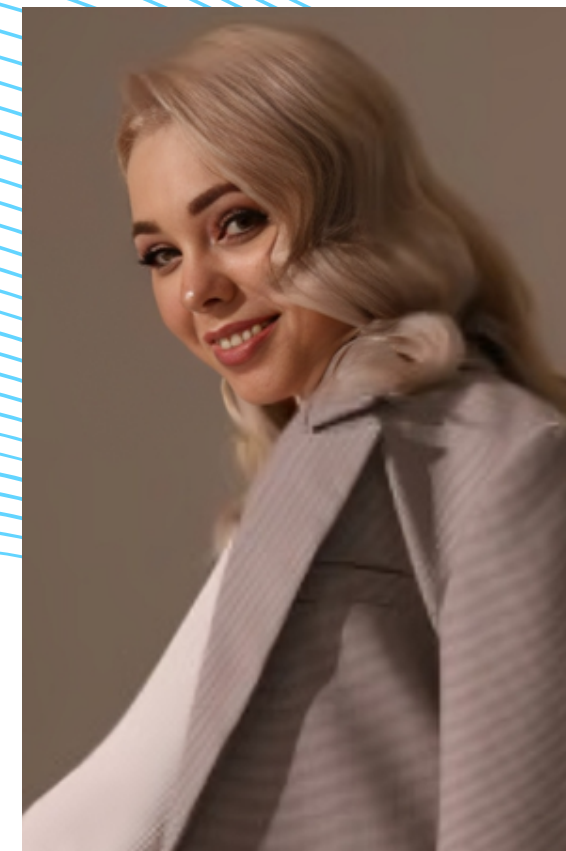
Amine Mekkaoui

Chief Executive Officer
amekkaoui@croyten.com



Julius John

Head of Projects and Technology
jjohn@croyten.com



Marta Kolyshkina

Head of Sales and Marketing
mkolyshkina@croyten.com

Artificial Intelligence for Banks

Unlocking the future of banking
and financial services



(617) 477-6888 (300)

contact@croyten.com

www.croyten.com

275 Grove Street Building 2, 4th Floor
Newton MA 02466

